
SUMIDA CORPORATION

2005 4th Quarter and Financial Year Results

15th February 2006

CFO

SABURO MATSUDA

1. Consolidated Results of Operations – Q4

(million yen, %)

	<u>2004</u>	<u>2005</u>	<u>Change</u>	<u>% Change</u>
Net Sales	9,361	10,317	956	10.2%
Operating Profit	832	926	94	11.3%
Operating Profit Ratio	8.9%	9.0%		
Recurring Profit	652	997	345	52.9%
Net Income	56	1,153	1,097	20.6X

2. Net Sales Comparison – Q4

(million yen, %)

	<u>2004</u>	<u>2005</u>	<u>Change</u>	<u>Change %</u>
Magnetic	4,282	5,779	1,497	35.0%
Inverter	2,716	2,282	-434	-16.0%
Automotive	1,795	1,763	-32	-1.8%
PMC	568	493	-75	-13.2%
Total	<u>9,361</u>	<u>10,317</u>	<u>964</u>	<u>10.2%</u>

3. Operating Profit Comparison – Q4

(million yen, %)

	<u>2004</u>	<u>2005</u>	<u>Change</u>	<u>% Change</u>
Magnetic	1,983	2,563	580	29.2%
Inverter	311	442	131	42.1%
Automotive	498	233	-265	-53.2%
Subtotal	2,792	3,238	446	16.0%
PMC	64	112	48	75.0%
Elimination	-2,024	-2,424	400	
Operating Profit	<u>832</u>	<u>926</u>	<u>94</u>	<u>11.3%</u>

4. Operating Profit Ratio Comparison – Q4

(Unit: %)

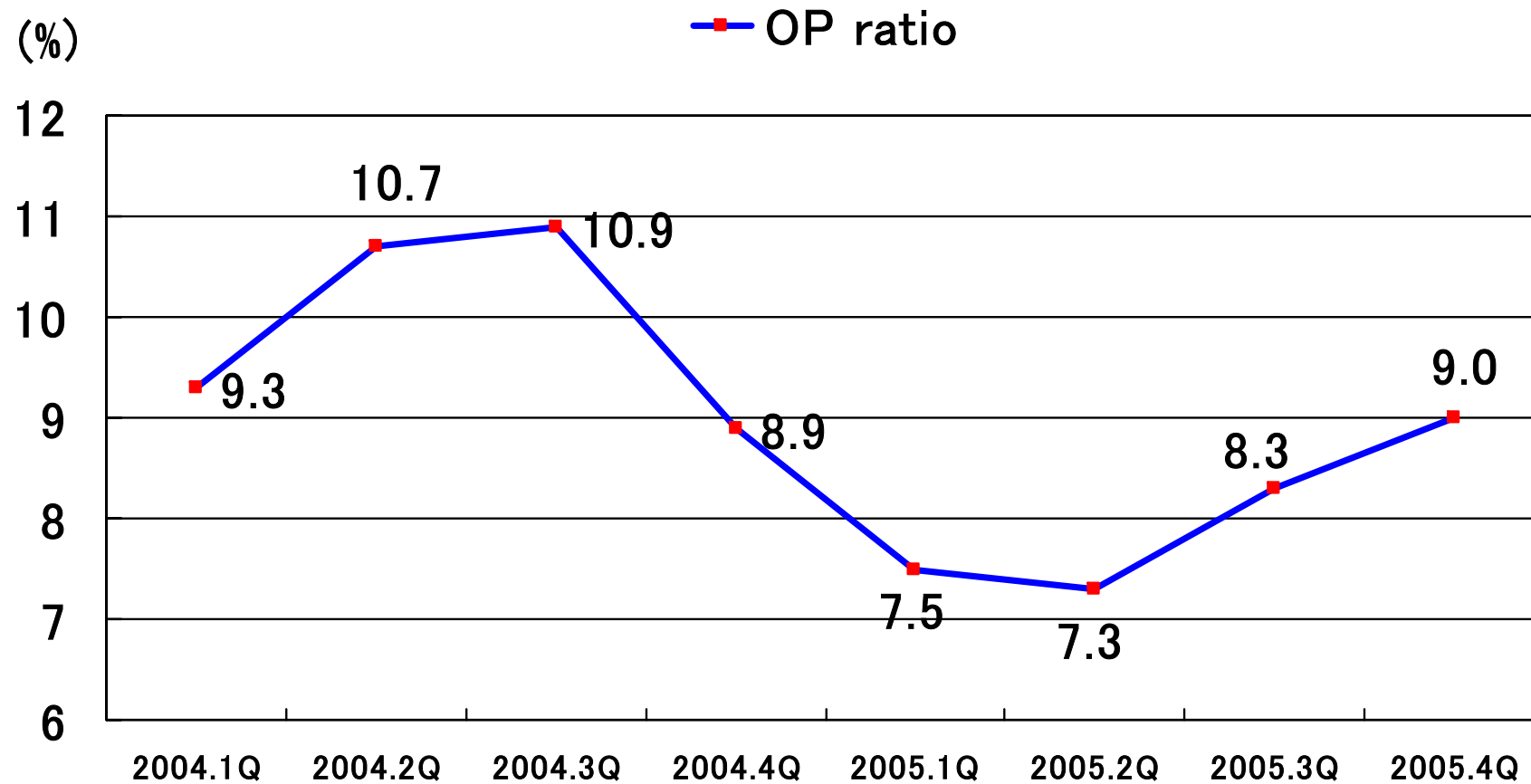
	<u>2004</u>	<u>2005</u>	<u>% Change</u>
Magnetic	46.3	44.3	-2.0 %
Inverter	11.5	19.4	7.9%
Automotive	27.7	13.2	- 14.5%
PMC	11.3	22.7	11.4%

5. Consolidated Results of Financial Year 2005

(million yen, %)

	<u>2004</u>	<u>2005</u>	<u>Change</u>	<u>% Change</u>
Net Sales	36,246	39,666	3,420	9.4%
Operating Profit	3,611	3,183	-428	-11.9%
Operating Profit Ratio	10.0%	8.0%		-2.0%
Recurring Profit	3,128	2,853	-275	-8.8%
Net Income	1,807	2,435	628	34.8%

6. Operating Profit Ratio (Trend)



7. Financial Year Sales Comparison

(million yen, %)

	<u>2004</u>	<u>2005</u>	<u>Change</u>	<u>% Change</u>
Magnetic	17,634	19,315	1,681	9.5%
Inverter	9,044	10,536	1,492	16.5%
Automotive	6,091	7,592	1,501	24.6%
PMC	3,477	2,223	-1,254	-36.1%
Total	<u>36,246</u>	<u>39,666</u>	<u>3,420</u>	<u>9.4%</u>

8. Financial Year Operating Profit Comparison

(million yen, %)

	<u>2004</u>	<u>2005</u>	<u>Change</u>	<u>% Change</u>
Magnetic	8,593	8,753	160	1.9%
Inverter	1,344	1,765	421	31.3%
Automotive	1,835	1,666	-169	-9.2%
Subtotal	11,772	12,184	412	3.5%
PMC	450	438	-12	-2.7%
Elimination	-8,611	-9,439	828	
Operating Profit	<u>3,611</u>	<u>3,183</u>	<u>-428</u>	<u>-11.9%</u>

10. Estimation of FY 2006 Q1 (Including VOGT)

(million yen, %)

	<u>05 Q1</u>	<u>06 Q1</u>	<u>Change</u>	<u>% Change</u>
Net Sales	9,434	14,200	4,776	50.7%
Operating Profit	708	929	212	29.9%
Operating Profit Ratio	7.5%	6.5%		
Recurring Profit	610	780	170	27.9%
Net Income	374	500	126	33.7%

End of the Report

Disclaimer

This material is provided to investors and business clients only for the purpose of evaluation of our company. Final decision must be made by each investor. The company shall not take any responsibility for any damage arising in connection with the information provided herein that investors may suffer. The forecasts of future performance contained in this report represent estimates based on factors the company considers relevant at this present time. Actual performance may vary. Consequently, no express or implied warranty can be made regarding future performance.