

March 16<sup>th</sup>, 2024

To the Shareholders

Company Name	<b>SUMIDA CORPORATION</b>
Representative	Kanji Hori, Representative Executive Officer (CEO) (Securities Code 6817, Prime Market, Tokyo Stock Exchange)
For Inquiries	PR / IR Team (Phone: +81-3-6758-2470)

**Notice Regarding a Partial Correction of the Notice of the  
69<sup>th</sup> Annual General Meeting of Shareholders**

SUMIDA CORPORATION would like to announce a partial correction to the content of the “Notice of the 69<sup>th</sup> Annual General Meeting of Shareholders”. We apologize for the error and provide details of the corrections below.

The corrected sections are as follows. (The parts that has been corrected is shown by underlined text.)

1. “Notice of the 69<sup>th</sup> Annual General Meeting of Shareholders”, page 38,  
Business Report, 1. Matters Concerning the Current Status of the Sumida Group,  
(7) Employees (as of December 31, 2023), (i) Employees of the Sumida Group

[Before Correction]

**(7) Employees (as of December 31, 2023)**

**(i) Employees of the Sumida Group**

Business segments	Number of employees	Changes from the end of the previous fiscal year
Asia Pacific Business	<u>12,371</u>	<u>Decrease by 2,665</u>
EU Business	2,999	Increase by 144
Company-wide (common)	94	0
Total	<u>15,464</u>	<u>Decrease by 2,521</u>

Notes:

1. The number of employees is the number of persons who engage in work in the Sumida Group.
2. “Company-wide (common)” indicates the number of employees posted in Sumida Corporate Service Incorporated which carries out a headquarter and support function, in Sumida Electric (H.K.) Company Limited and in the Service Department of Sumida Electric Co., Ltd.
3. The number of employees includes those in the consigned processing companies.

[After Correction]

**(7) Employees (as of December 31, 2023)**

**(i) Employees of the Sumida Group**

Business segments	Number of employees	Changes from the end of the previous fiscal year
Asia Pacific Business	<u>12,362</u>	<u>Decrease by 2,674</u>
EU Business	2,999	Increase by 144
Company-wide (common)	94	0
Total	<u>15,455</u>	<u>Decrease by 2,530</u>

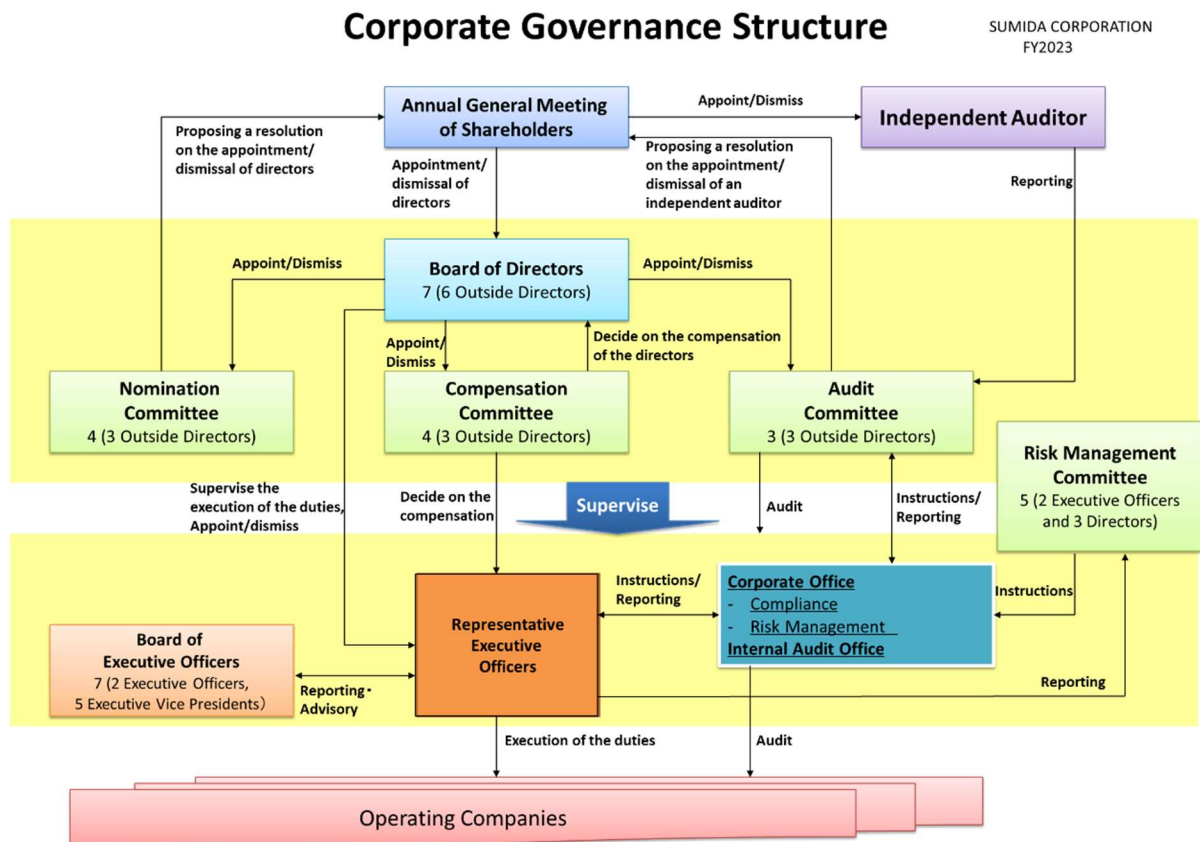
Notes:

1. The number of employees is the number of persons who engage in work in the Sumida Group.
2. “Company-wide (common)” indicates the number of employees posted in Sumida Corporate Service Incorporated which carries out a headquarter and support function, in Sumida Electric (H.K.) Company Limited and in the Service Department of Sumida Electric Co., Ltd.
3. The number of employees includes those in the consigned processing companies.

2. Notice of the 69<sup>th</sup> Annual General Meeting of Shareholders, page 59,

(5) System to secure properness of operations and operation status of the system, (Reference) Corporate governance system (as of December 31, 2023)

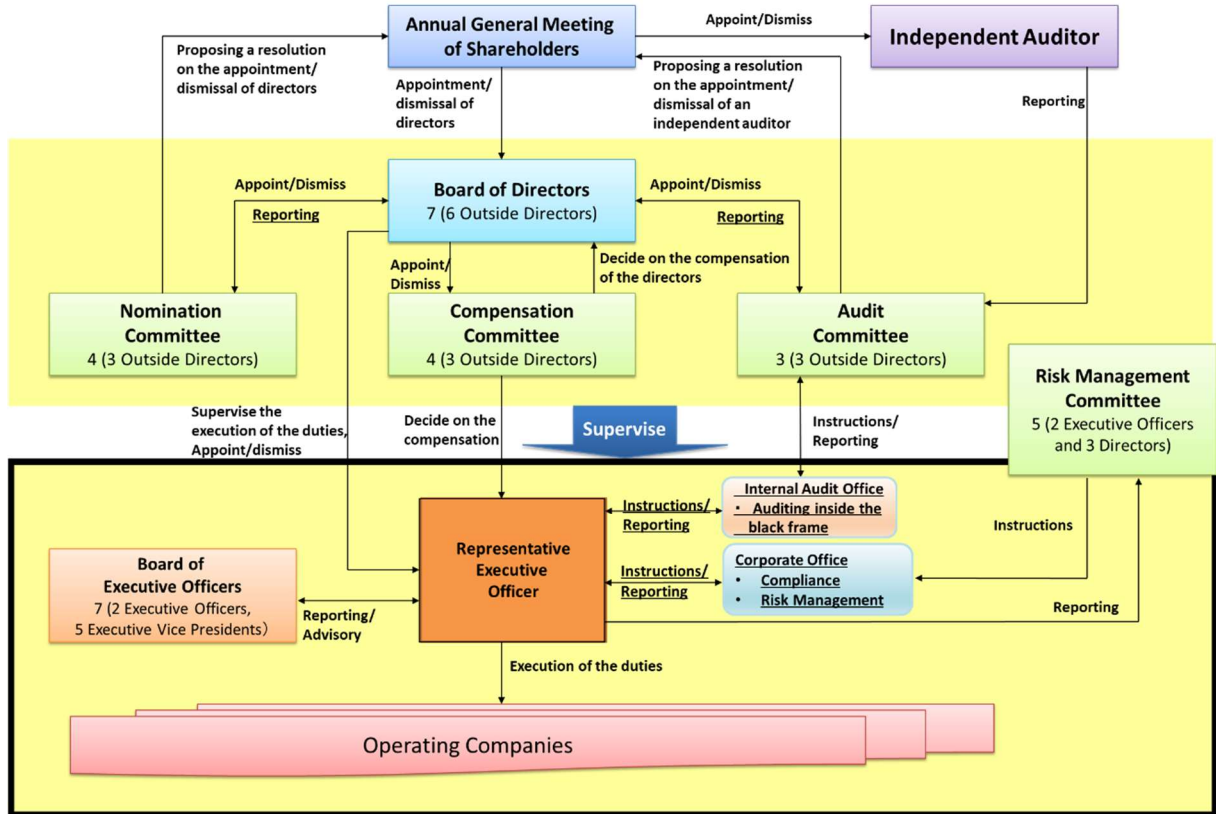
[Before Correction]



[After Correction]

## Corporate Governance Structure

SUMIDA CORPORATION  
FY2023



\*\*\*\*\*